



Nuffield House Holmesley Road

, Borehamwood, WD6 1AL

£1,900 Per month

A lovely contemporary flat on the first floor of a newly built two bedroom flat within a new built development located in the heart of Borehamwood and now available. Within easy access of Elstree & Borehamwood station. The flat comprises of a good size fully fitted contemporary living/ kitchen/dining area. The kitchen is modern and fully fitted. Together with two bedrooms (one with en-suite), storage area and french/patio doors leading to a balcony area.

Within close proximity to facilities such as Meadow Park, a theatre, an academy and primary school.

Located with easy access to both St Albans and London, (12 miles (19 km) from Charing Cross). Borehamwood falls within the civil parish of Elstree and Borehamwood and the London commuter belt.

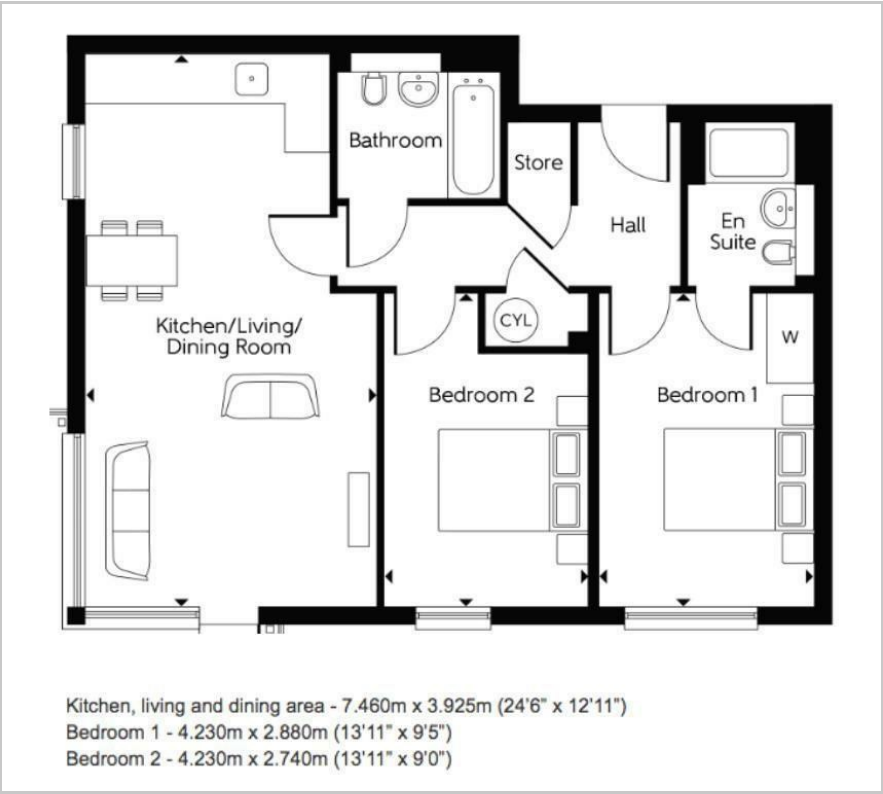
- 2 bedrooms, 2 bathrooms
- Modern large living / dining area
- Contemporary kitchen
- Bedroom with en-suite
- Balcony area
- Unfurnished
- Available now
- Allocated parking

Viewing

Please contact us on 020 3198 4517 if you wish to arrange a viewing appointment for this property or require further information.



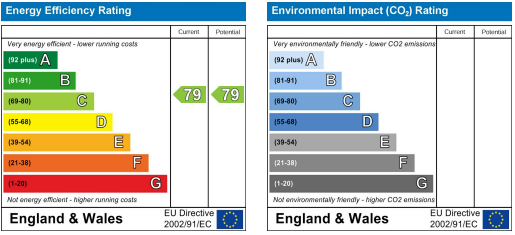
Floor Plan



Area Map



Energy Efficiency Graph



These particulars, whilst believed to be accurate are set out as a general outline only for guidance and do not constitute any part of an offer or contract. Intending purchasers should not rely on them as statements of representation of fact, but must satisfy themselves by inspection or otherwise as to their accuracy. No person in this firms employment has the authority to make or give any representation or warranty in respect of the property.